

ATP

DESCRIPTION

AMC MECANOCAUCHO® ATP type mounts have been designed to provide effective vibration isolation of medium to high frequency applications in a variety of industrial machinery, gensets, motor pumps, motor compressors, hydraulic units, etc.

The top metal part is cup shaped to protect the rubber section from contamination by oil, grease, petrol, diesel, dust, etc.

OPERATION AND ASSEMBLY

ATP mountings use the rubber section in a shear mode to achieve the best load/deflection values. Due to the interior design of the rubber section, they have a progressive stiffness feature. In this way they prevent metal to metal contact in the case of impacts or extreme overload in transient shock conditions on mobile equipment.

ATP mounts can be attached to the support structure by set screws or bolts, or by threaded pins previously securely grouted to the concrete to suit the base plate attachment hole dimensions.

TECHNICAL CHARACTERISTICS

The compound used is based on a standard natural rubber specifically designed to have good ageing properties.

Load capacities shown in catalogue are the maximum Static values with the capability of withstanding occasional extreme dynamic overloads .

ATP mounts have stiffness values 4 times greater in the radial plane than the axial plane, providing effective resistance to transient lateral shock loads.

FOR NEW PROJECTS, PREFERABLY SELECT FIGURE 2



Figure 1

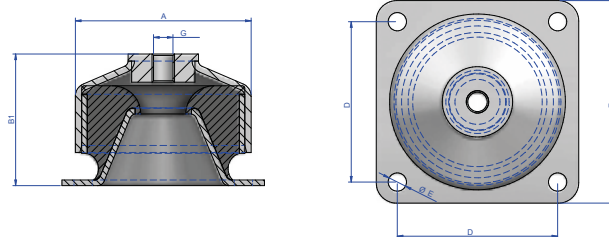
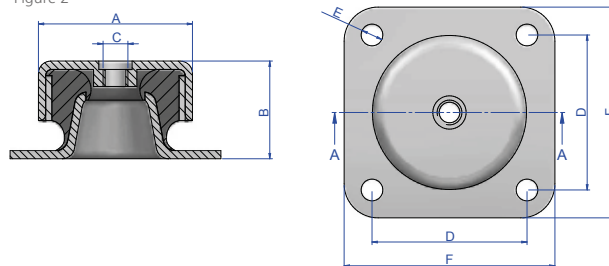


Figure 2



Type	A (mm.)	B (mm.)	C	D (mm.)	E (mm.)	F (mm.)	G (mm.)	Weight (gr.)	B1	Code	Load (Kg.)	Shore	FIG.
ATP 020	49,7	31,5	M8	50	7	68	16	143	-	133101	50	45 Sh	2
										133102	75	60 Sh	2
										133103	100	75 Sh	2
ATP 120	73,6	43	M10	72,2	9,2	90	32	379	53	133104	70	45 Sh	2
										133105	120	60 Sh	2
										133106	175	75 Sh	2
										133151	70	45 Sh	1
										133152	120	60 Sh	1
										133153	175	75 Sh	1
ATP 220	91	53	M12	90	11	114,2	36	618	63	133107	140	45 Sh	2
										133108	200	60 Sh	2
										133109	300	75 Sh	2
										133154	140	45 Sh	1
										133155	200	60 Sh	1
										133156	300	75 Sh	1
ATP 420	124,5	75	M16	114	13	144	60	1510	94	133110	300	45 Sh	2
										133111	500	60 Sh	2
										133112	800	75 Sh	2
										133157	300	45 Sh	1
										133158	500	60 Sh	1
										133159	800	75 Sh	1

ADVANTAGES

- Easily assembled to the machine and the support structure.
- Top Cap protects the rubber section against various contaminants.

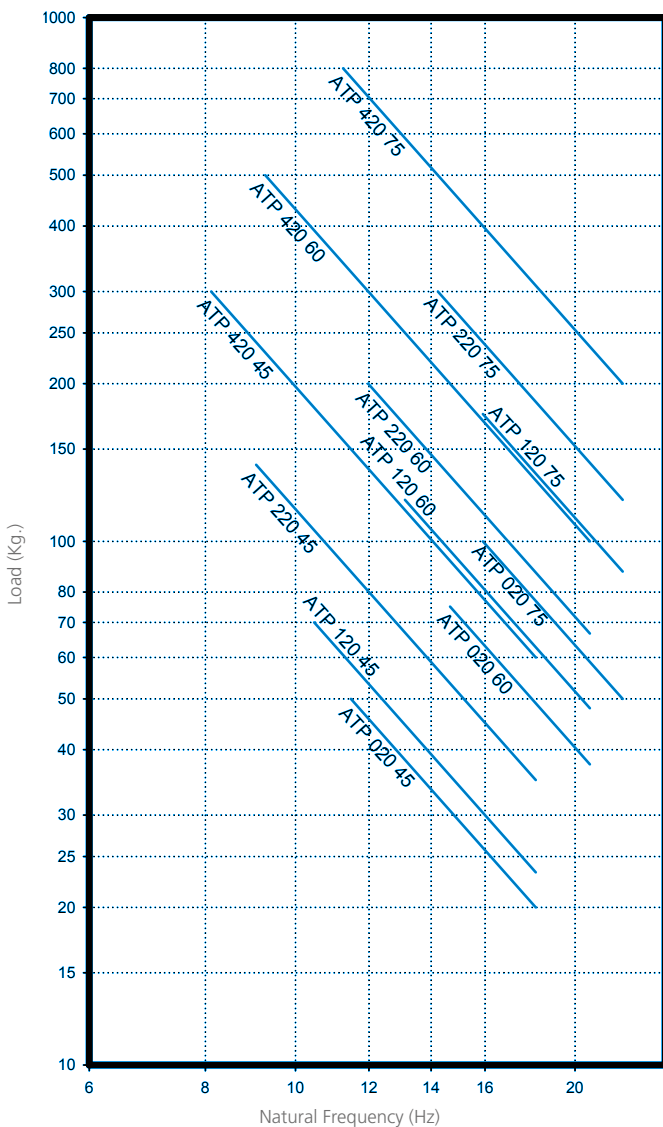
Effectiveness – three variations in hardness A 45, Medium: hardness B 60, Hard: hardness C 75). This enables the user to choose each mount depending on the load to be supported and the frequency of the vibrations to be attenuated.

APPLICATIONS

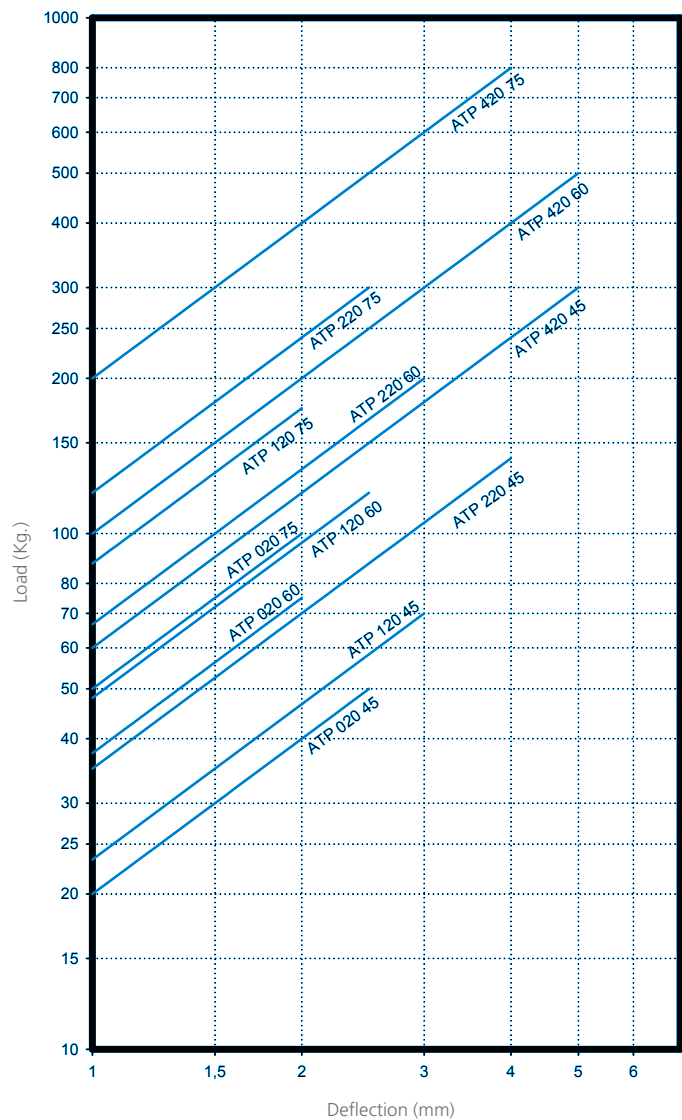
Suspension systems where it is deemed necessary to control any Pitching or Rolling movement which could strain external connections.

- Medium and high frequency motor compressor units.
- Gen sets.
- Hydraulic Units.
- Marine auxiliary units.
- Ventilators, etc.

NATURAL FREQUENCY
 AMC MECANOCAUCHO® ATP TYPE



LOAD DEFLECTION GRAPH
 AMC MECANOCAUCHO® ATP TYPE



* In order to adapt its products to the state of the art, AMC .A. reserves the right to modify the conception and manufacture of the materials presented in this catalogue without prior notice.