

FLOATING FLOOR MOUNTS

BF Floating floor mounts

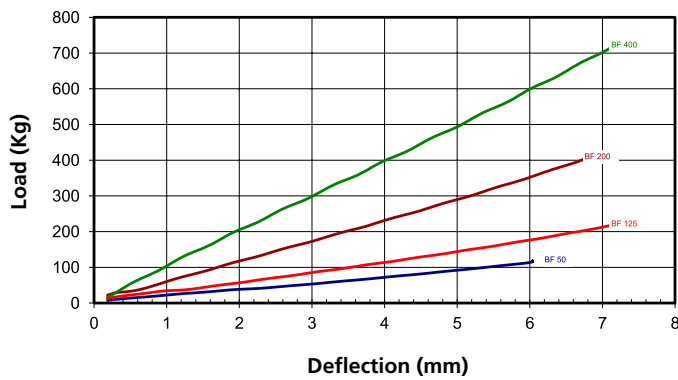
Load from 50 to 400 kg

A range designed for use in floating floors or machinery working at more than 700 r.p.m. Manufactured in rubber SMR 5CV type with excellent mechanical insulation qualities. We are able to manufacture them in different diameters and heights.

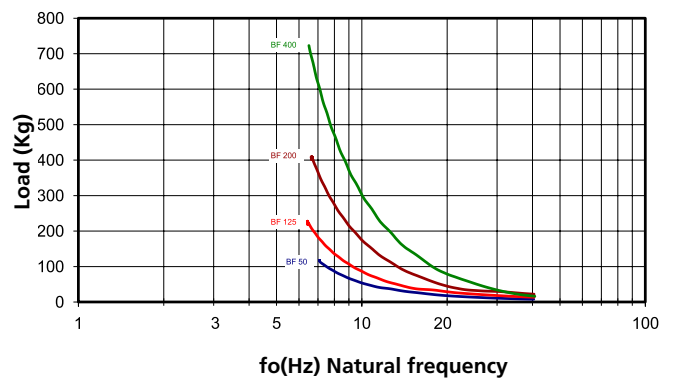


Dynamic behaviour

Static load deflection graph



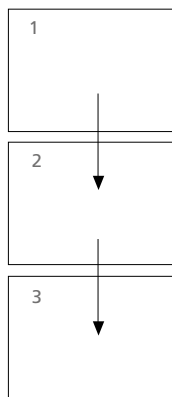
Natural frequency (Hz)



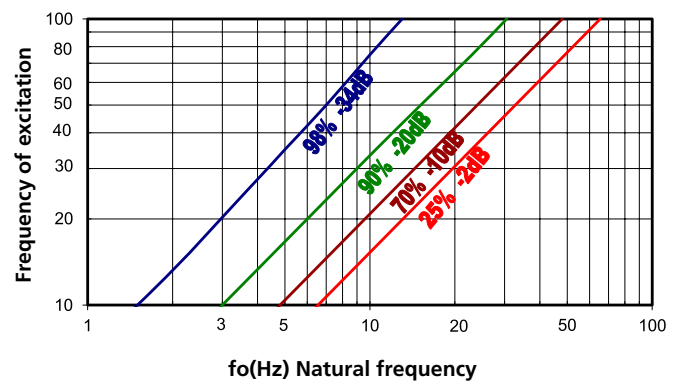
To select correct mounting, following data are needed:

- Load per mounting (kg).
- Disturbing frequency (Hz).

Select correct load line in diagram 1 and refer to diagram 2 to obtain the Natural frequency. With this natural frequency prolong this line to the diagram 3 and obtain the % of isolation at the given frequency of excitation.



% of isolation and attenuation in dB



	REF. AMC	MAX. PERMANENT LOAD	Ø	Height	CODE
	BF 50	50 Kg.	40	28	24201
	BF 125	125 Kg.	60	36	24202
	BF 200	200 Kg.	80	40	24203
	BF 400	400 Kg.	95	40	24204

AKUSTIK + AMC Mecanocaucho & AKUSTIK+^{by getzon}sylomer[®]

AKUSTIK+ AMC Mecanocaucho

FLOATING FLOOR MOUNTS

G Floating floor mounts

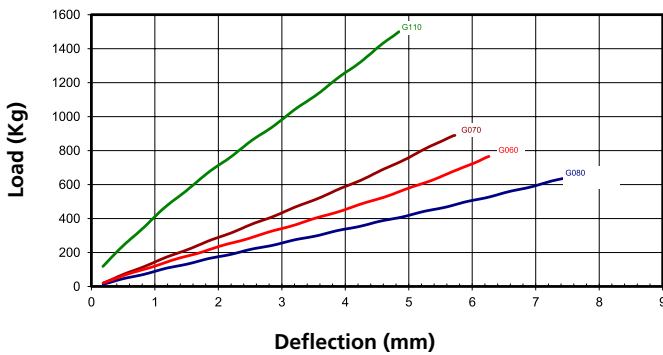
Load from 300 to 800 kg

A range of rectangular mounts ideal for those installations that do not need anchoring or fixation.

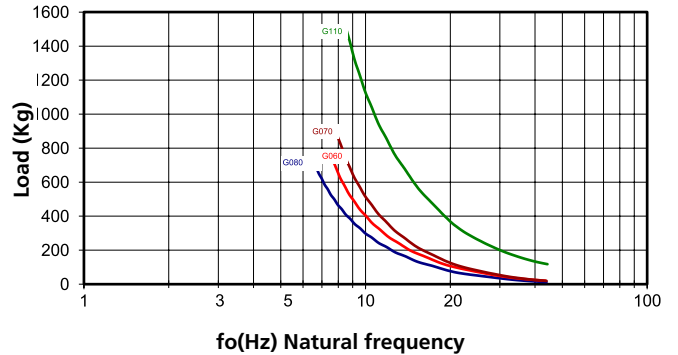


Dynamic behaviour

Static load deflection graph



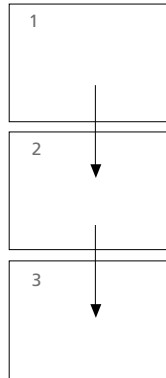
Natural frequency (Hz)



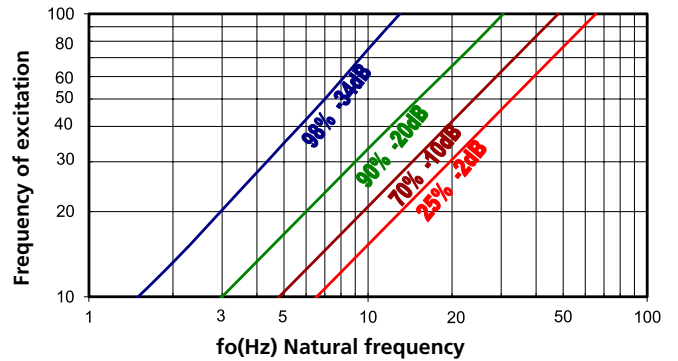
To select correct mounting, following data are needed:

- Load per mounting (kg).
- Disturbing frequency (Hz).

Select correct load line in diagram 1 and refer to diagram 2 to obtain the Natural frequency. With this natural frequency prolong this line to the diagram 3 and obtain the % of isolation at the given frequency of excitation.



% of isolation and attenuation in dB



	REF. AMC	A (mm.)	B (mm.)	LOAD MIN (Kg.)	LOAD MAX (Kg.)	CODE
	G-060	70	30	180	300	152005
	G-070	80	30	350	600	152006
	G-090	100	40	200	500	152008
	G-110	110	30	1600	3000	152009
	G-080	80	50	200	500	152007